



REIMAGINED

# MID-CENTURY

*AN OUTDATED QUAD-LEVEL  
IS TRANSFORMED INTO A  
FOREVER HOME*

TEXT BY GIUSEPPA NADROWSKI | PHOTOGRAPHY BY SHELBY DUBIN

**INSPIRED ROOMS**

*This page:* The original and handmade wood paneling is what sold the Babbie family on this 1960s home. Highlighting this one-of-a-kind accent inspired the entire renovation. *Opposite page:* An entertainer's paradise, the lower-level lounge is defined by conversation-ready seating and custom details.





House-hunting wasn't going well for Kristina and Fadi Babbie — until they stumbled upon a listing their Realtor “was shocked” they wanted to see.

“When we walked in, Fadi and I immediately looked at each other and we were like, This is going to be our house,” Kristina says. The home, built in 1967, had more than 5,000 square feet of living area, but its appointments were less than pleasant — outdated bathrooms, unsightly carpet, a cramped '90s-era kitchen, and awkward cabinetry. On the plus side, it sat on a gorgeous half-acre lot and featured one-of-a-kind custom millwork — an accent the couple was fascinated by.

With the ability to envision the home's potential, the couple — who were expecting their first child at the time — decided to make the Mid-century quad-level their own.

Their goal was to bring the residence up to date

#### KID-APPROVED

Above: From the salvaged and repurposed pew to the modern oval dining table and statement pendant above, this eating nook seamlessly combines fashion and function.

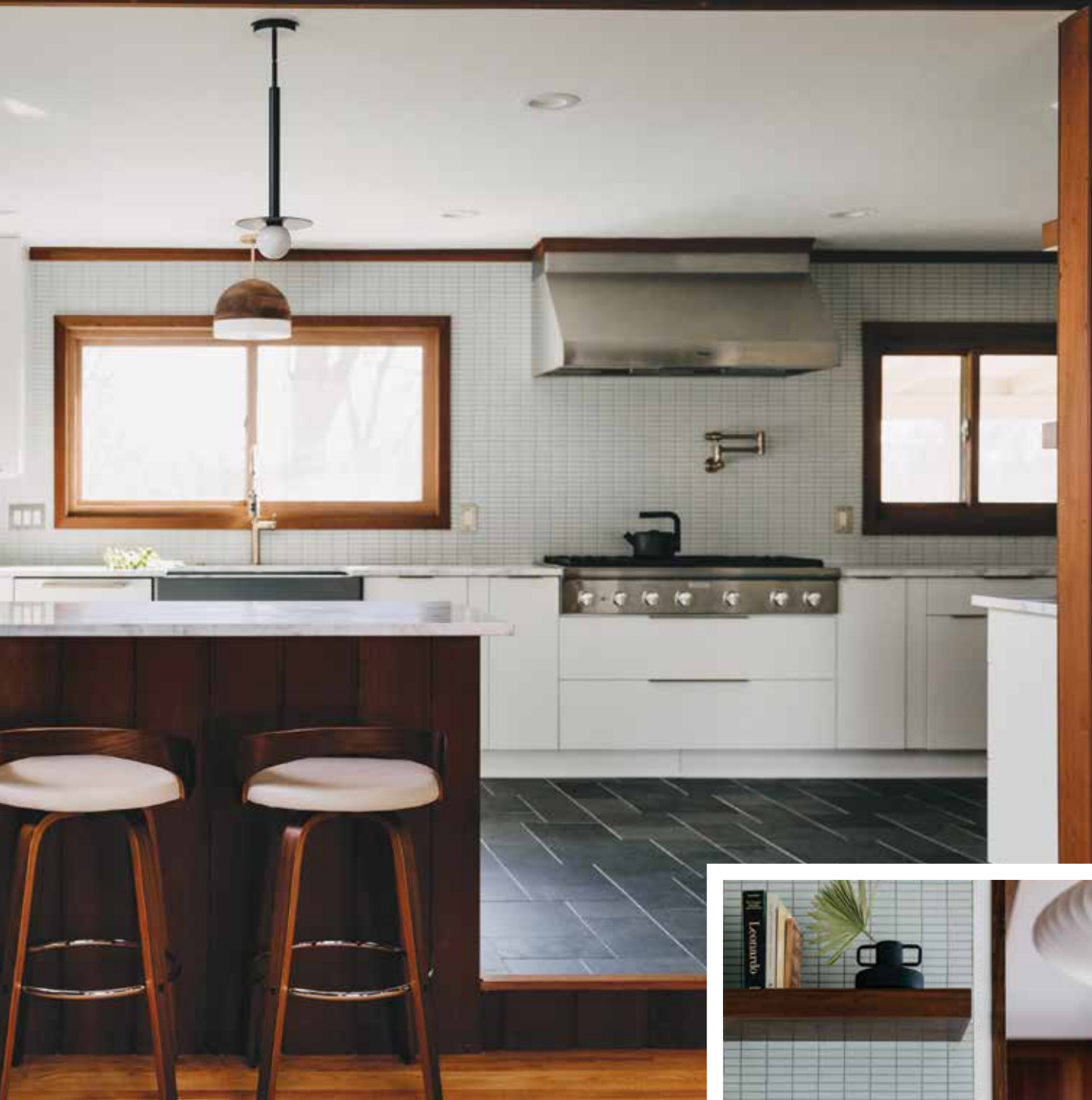
while respecting its legacy. Above all, the home's wood paneling was to remain. The original homeowner, who ran a sawmill, had meticulously hand-crafted each individual wall plank from rare Alaskan red pine and California redwood. When the couple interviewed designers, most wanted to alter the precious wood. Thankfully, they found Lyzz Hope, of MOZ Interiors, who shared the couple's vision. “She was just so fascinated with the house, too,” Kristina remembers. “We hit it off right away.”

Having grown up in her mother's antique shop, Hope, who launched her Rochester Hills and Birmingham-based studio in 2019, specializes

#### A CHEF'S DREAM

Above: To create a larger cooking footprint for the homeowner, designer Lyzz Hope combined the former kitchen and dining room into one sleek and open area. Inset: Stacked gray-blue tiles and warm wood shelves given the bright white kitchen subtle color.





*“ONE OF THE MAIN ASPECTS  
OF ANY SPACE I DESIGN IS  
BRINGING SOMETHING FROM  
THE PAST INTO THE PRESENT.”*

— LYZZ HOPE





in mixing vintage and antique furnishings with modern designs.

Her first priority was to reimagine the kitchen. As a private chef, Fadi needed more room. To accommodate a larger footprint, the opening above an existing peninsula was adjusted and the home's former dining room was blended into the new area by removing a wall. Crisp white cabinetry brightens the kitchen, while Matarazzo polished quartzite countertops add a natural finish. Stacked gray-blue tile adds subtle color to the room and complements its new slate floors.

An eating nook offers the perfect place for

the couple and their now 16-month-old daughter to enjoy meals together. Hope sourced a pew from Architectural Salvage Warehouse Detroit and repurposed it into a child-friendly bench. "One of the main aspects of any space I design is bringing something from the past into the present. It gives a room soul," she says. Hope gave the pew personality with a custom cushion in a tiger-print Dedar fabric.

In the living room, soaring ceilings warranted dramatic lighting. Hope chose an iconic Herman Miller pendant, as it "casts a very soft, diffused glow over the room and makes the (large) room feel more intimate." Because the family is a proponent

of clean living, the spacious sectional was enveloped in a plush cotton velvet. "We didn't use anything that wasn't a natural material," Hope notes. The original floors and paneling were refinished so that they now glow as they originally did.

Behind the sofa, a pony wall was transformed into a planter. "Plants are essential in every single space. The more the better, in my mind," Hope says. A black-and-white powder room features an abstract mural that Hope hand-painted herself.

Off the lower-level lounge, a second powder room received an equally bold face-lift with





**RETRO CURIOSITIES**

Above: An original art piece by designer Lyzz Hope looks right at home with a period-perfect clock and vintage typewriter. Right: A refinished and original built-in gets a modern touch with contemporary accents and vibrant plants.



**SUITE ESCAPE**

Above: A favorite of the homeowners, the primary bedroom features a new fireplace; sleek furnishings; gorgeous natural light thanks to skylights above; a dramatic warm-glow pendant; and a relaxing minimalist aesthetic.

contemporary accents. Since the couple wanted to retain the room’s existing tile, Hope sought out a Lemieux et Cie wallpaper with a modern chinoiserie print to effortlessly blend the elements. Kristina is thrilled with the transformation and laughs that “everyone comes over and wants to take selfies in there.”

The updated lounge, which the couple uses for entertaining, features a custom bar outfitted with Tilebar’s Antique Gray tile, brass wire bar stools, and glass shelves. Retro-inspired sconces add a soft glow to the lounge, which is now the home of four vintage Barcelona chairs that inspired the renovation’s overall aesthetic.



Originally designed by Ludwig Mies van der Rohe in 1929, the Bauhaus-era chairs are a pillar of the Mid-century movement. The Babbies were lucky to have found them at an estate sale prior to moving. “I just envisioned that space having those chairs in it,” Hope says, adding that the placement of the chairs around a green agate table “instigates conversation.” For Kristina Babbie, the chairs are also a welcome repose. “I sit down and read, and lose myself in a book,” she says.

Nearby, a vintage record player sings below an original photograph Hope created with photographer Shelby Dubin as part of a collection entitled, “Tell Me I’m Pretty.” Original accents, such as the newly refinished checkerboard wood flooring and natural fireplace, add a warm and inviting ambience.

Hope says the couple wanted the primary suite “to be very soft and serene.” The room, abundant with natural light, overlooks the home’s wooded yard and has a private terrace. “It’s like a retreat, so they didn’t want to over-design it,” she explains. A former addition, it had an awkward wall of cabinetry that had been designed to conceal a chimney. The chimney became part of a new electric fireplace, which is clad in a sleek black tile. Antique accents like the settee and server continue the home’s modern-meets-vintage vibe.

Hope says the home “has a wonderful, happy energy.” She adds, “I’m very happy with it. I think it ended up being better than we all imagined.”

Kristina Babbie agrees: “This is our forever home.” ♦

**TIME TO RELAX**

*Above:* A sleek new bar features brass and glass accents alongside the original custom wood paneling. *Right:* To update the powder room while maintaining its original tilework, Hope used a blush pink wallpaper to pull the pieces together.







**INTERIOR DESIGNER**

Lyzz Hope, MOZ Interiors, Birmingham and Rochester Hills, [mozinteriors.com](http://mozinteriors.com)

**ADDITIONAL CONTRIBUTOR**

Contractor: Adam Hammoud, True Built Custom Contracting, Dearborn

**SAUCER BUBBLE PENDANT**

Design Within Reach, Grand Rapids, [dwr.com](http://dwr.com)

“I love playing with scale especially with an iconic piece like the Herman Miller Saucer Bubble Pendant,” says Lyzz Hope.



**BLAISE WALLPAPER**

Lemieux et Cie, [lemieuxetcie.com](http://lemieuxetcie.com)

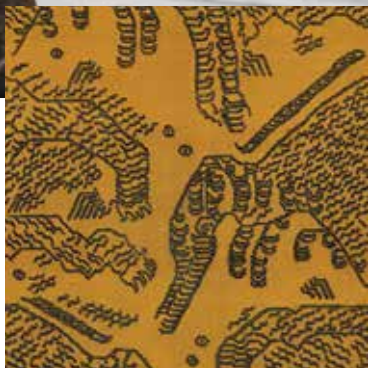
“This is a modern and playful approach to a traditional bird wallpaper by an amazing designer named Christiane Lemieux.”



**TIGER MOUNTAIN**

Dedar, Tennant & Associates, Michigan Design Center, Troy, [dedar.com](http://dedar.com)

“I’ve swooned over this fabric for the longest time. It’s so intriguing and is an unpredictable play on the classic tiger print.”



**SANTORO AGATE COFFEE TABLE**

CB2, Birmingham, [cb2.com](http://cb2.com)

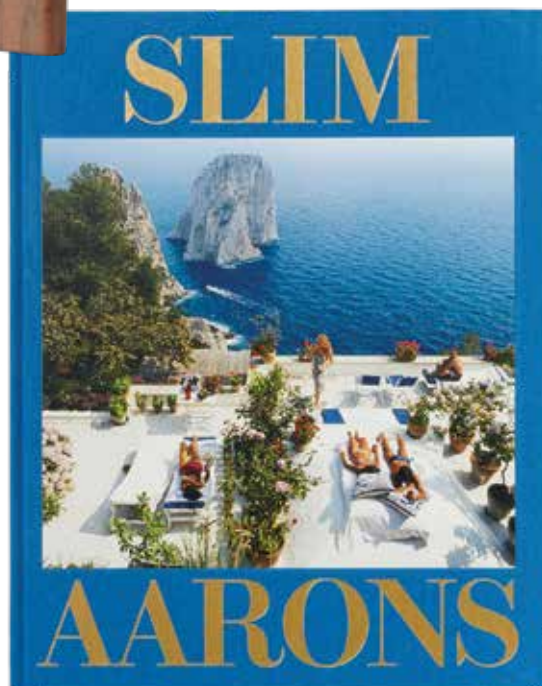
“The natural beauty of stone is a must have,” says Hope. “Whether it’s a simple bowl, candle stick, or it’s this gorgeous focal point in a seating area. Plus, CB2 in Birmingham has the very best staff, so I’ll take any excuse to go visit them.”



**“SLIM AARONS”: THE ESSENTIAL COLLECTION BOOK**

Serena & Lily, Birmingham, [serenandlily.com](http://serenandlily.com)

“You can never have too many coffee table books. Slim Aarons, a WWII war photographer turned photographer of the glamorous and lavish, has always been one my biggest influences.”



**BARCELONA CHAIR**

Design Within Reach, Grand Rapids, [dwr.com](http://dwr.com)

“These were an estate sale find from another icon in design.” This piece continues to be manufactured today, thanks to Design Within Reach.



PORTRAIT PHOTOGRAPHY BY SHELBY DUBIN